



# GMT MONTHLY MEMBERSHIP PROGRESS REPORT

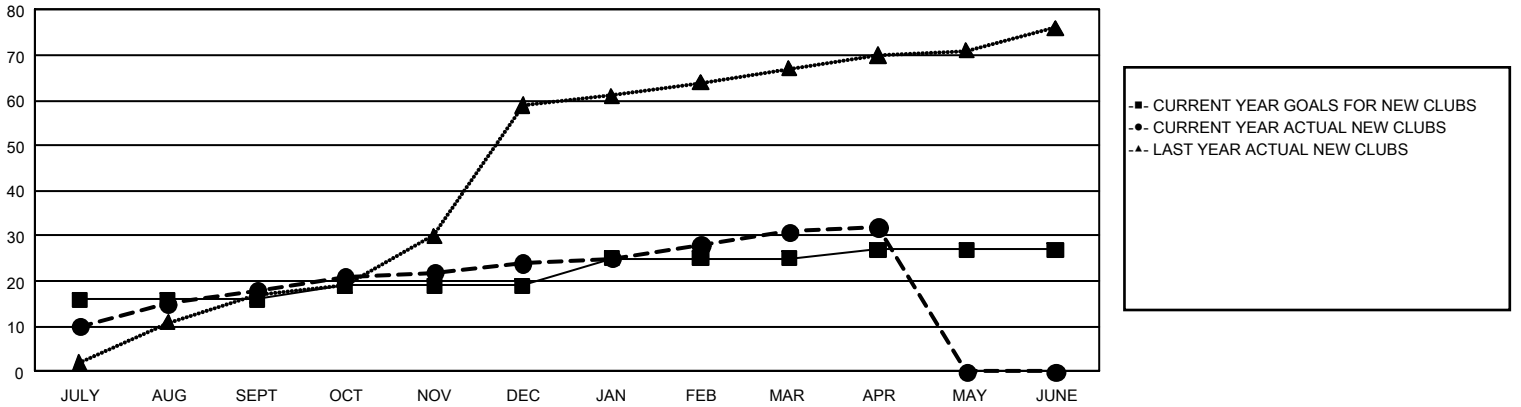
## GAT Constitutional Area 5 - MD 300 Taiwan

Results as of: 4/30/2026

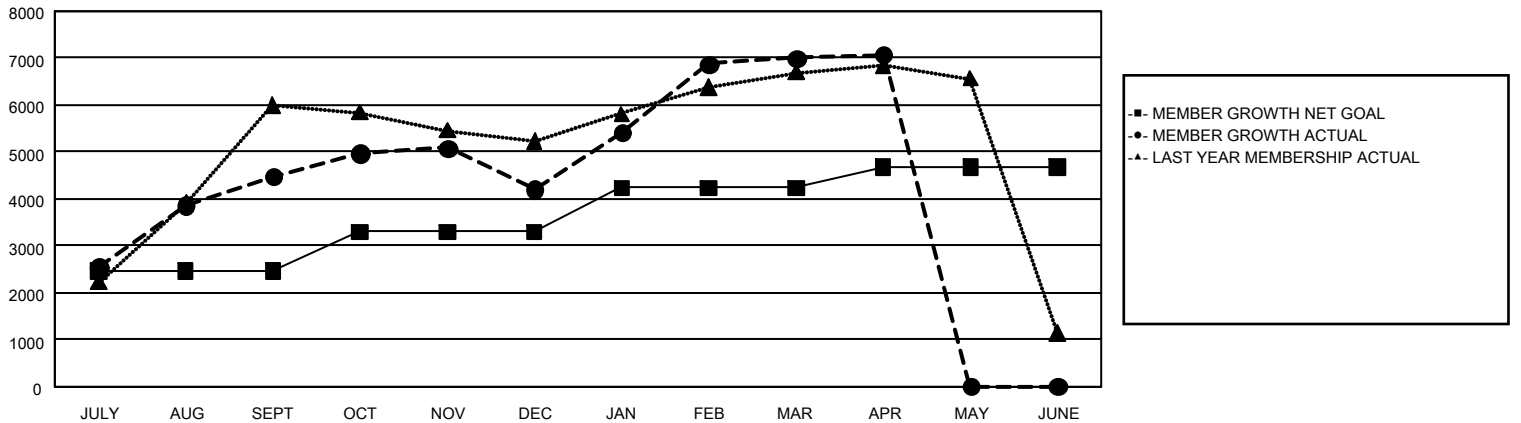
REPORT DOES NOT INCLUDE CLUBS IN UNDISTRICTED AREAS.

Clubs				Members			
RESULTS FOR 2025-2026				RESULTS FOR 2025-2026			
QUARTER	NEW CLUB GOAL	NEW CLUBS	DROPPED CLUBS	QUARTER	MEMBER GROWTH NET GOAL	MEMBER GROWTH ACTUAL	DROPPED MEMBERS ACTUAL (including transfers)
JULY/AUG/SEPT	16	18	3	JULY/AUG/SEPT	2,466	5,683	717
OCT/NOV/DEC	3	6	4	OCT/NOV/DEC	836	1,322	1,464
JAN/FEB/MAR	6	7	3	JAN/FEB/MAR	938	4,313	1,308
APR/MAY/JUNE	2	1	0	APR/MAY/JUNE	430	154	57

**GOALS AND ACTUAL NEW CLUBS CUMULATIVE**



**GOALS AND ACTUAL MEMBERS CUMULATIVE**



<b>DROPPED CLUBS: 10</b>	1,130 CLUBS OF 1,292 ADDED 1 OR MORE NEW MEMBERS	<b><u>GENDER DISTRIBUTION</u></b> MALE                      32,140 (64.79%) FEMALE                    17,455 (35.19%)
<b><u>DROPPED MEMBERS</u></b> DECEASED                      75 CLUB CANCELLED                25 OTHER                              3,446 <hr/> TOTAL                              3,546	<a href="#">CLICK HERE FOR CUMULATIVE MEMBERSHIP DATA</a>	TOTAL FAMILY UNIT MEMBERS                      5,059  FAMILY MEMBERS PAYING HALF DUES                      3,301